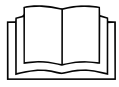


Valid for additional circuit board MM10019107

The target group for this installation manual is trained qualified personnel entrusted with the technical functioning and operation of the unit.



Read the installation instructions for the units and observe the safety information.

Safety instructions

Organizational measures

Risk of property damage and personal injury from lack of organizational measures

- Use equipment and protective gear suitable for the activity.

Danger of electric shock from live components.

- Prior to working on the electrical system, switch off the unit, disconnect the electrical system from the mains and prevent power from being switched on again. Check to ensure the system is dead.
- Use only insulated tools.

Check before replacing



Troubleshoot using the service manual.

Opening the appliance

FlexFusion

→ Remove the left side wall.

SpaceSaver

→ Remove the top cover from the unit.

For units with MagicHood, the hood must be removed beforehand.

Overview

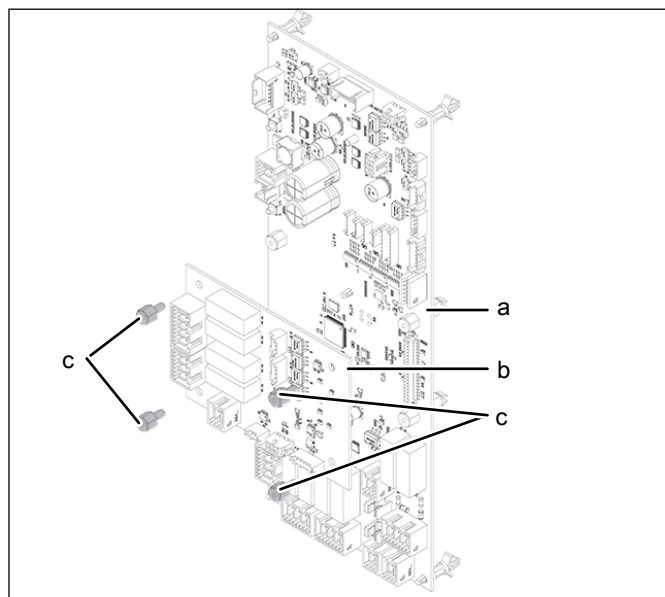


Image: Removing the additional circuit board

- a Control board
- b Additional circuit board
- c Plastic screw

- d Plastic clip
- e Threaded pin

Dismantling the additional circuit board

1. Disconnect all connectors on the additional circuit board.
2. Remove the plastic screws.
3. Remove the additional circuit board from the control board.

Installing the additional circuit board

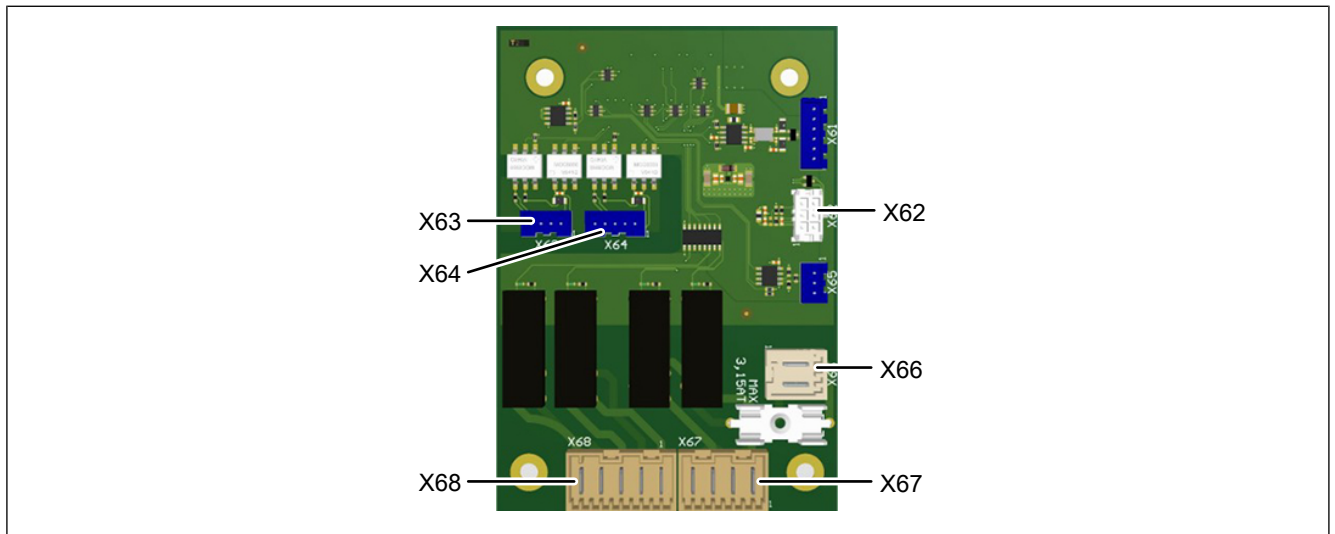


Image: Pin assignment of additional circuit board (option)

X62	CAN communication to motor power board T20 (only for 215, 221 for lower motor)	X66	Power supply X67
X63	Ignition electronics upper chamber (only for 215, 221 gas appliances)	X67	Pump control for grease collection system (option)
X64	Ignition electronics for lower chamber (only for 215, 221 gas appliances)	X68	Recirculation hood, smoke box

1. Plug the additional circuit board onto the control board.
2. Install the plastic screws.
3. Fit all plugs on the additional circuit board.

Closing the unit

FlexFusion

→ Attach the left side panel.

SpaceSaver

→ Fit the top cover.

Install on appliances with MagicHood the hood.