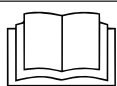


Valid for 211171, 10022164, 10022174, 10034014, 10034240, 10035673



Read the installation instructions for the units and observe the safety information.

The target group for this installation manual is trained qualified personnel entrusted with the technical functioning and operation of the unit.

## Required tools

- Cloth
- warm water with commercially available cleaning agent
- Rubber mallet

## Remove seal



Grab behind the seal

Image: Remove door seal

1. Grab behind the seal at one of the corners.
2. Pull the seal forward out of the groove.



Image: Thoroughly clean groove for sealing profile

1. Remove any sealing residues.
2. Thoroughly spray groove for sealing profile with warm soapy water.
3. Thoroughly wipe out the groove with a cloth.
4. Also under the glass and in places that are not visible.
5. Completely remove all soiling, for example grease residues.

## Replacing the profile seal of the cooking chamber door

### Install seal

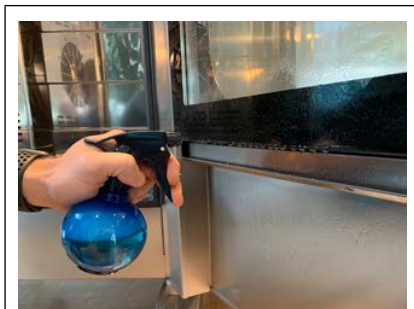


Image: Spray groove for sealing profile

1. Spray groove for sealing profile with soapy water.

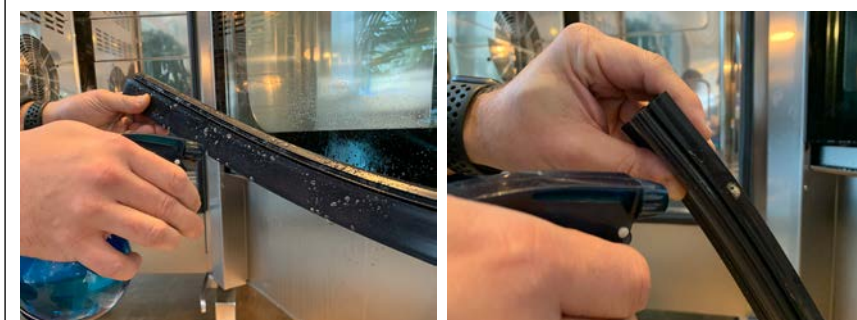


Image: Prepare door seal

1. Spray the seal with soapy water to help it slide into the groove.



Image: Attach door seal

1. Position the sealing profile in the groove and push it in as far as possible.

2. Start at the handle side.

↳ Seal remains in position

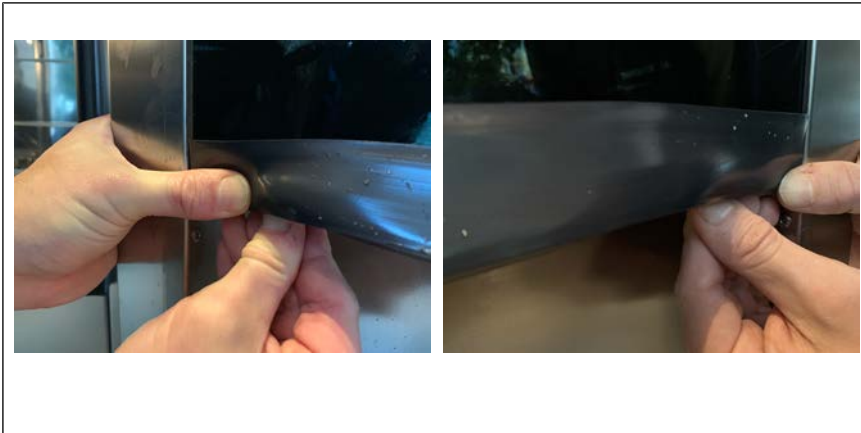


Image: Press corners into the groove from below

1. Insert the corners of the seal one after the other from below into the groove, completely if possible.



Image: Knock in door seal

1. Drive in the seal from below with the rubber mallet.
2. Start at the handle side.
3. From there, work forward to the unit side.

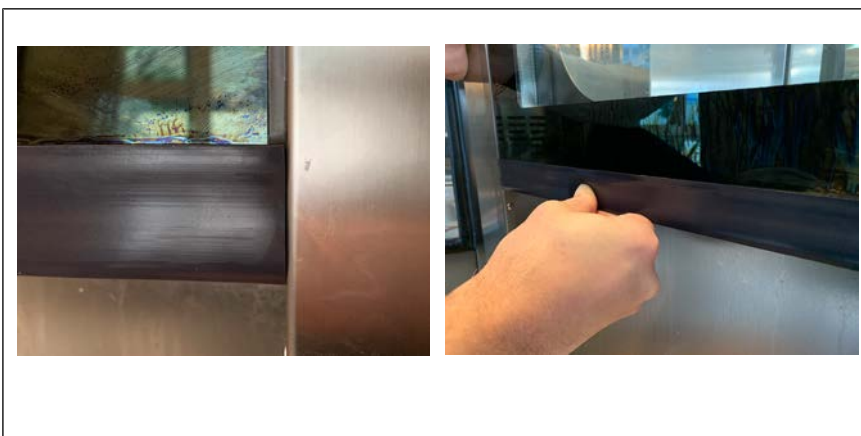


Image: Check and align seat

1. The gap dimension on the left and right must be the same.

## Replacing the profile seal of the cooking chamber door

---

2. If it is not, massage seal into place.

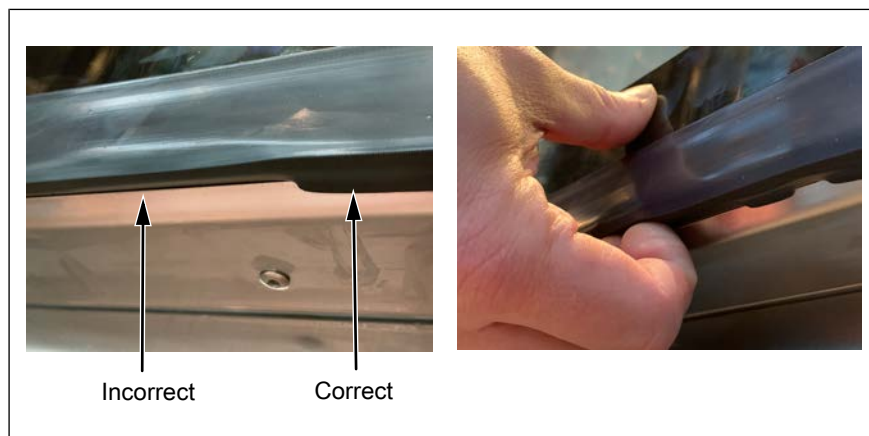


Image: Pull out the lip of the seal

Seal sits evenly in the sealing joint.

1. Check lip.
2. If necessary, pull out the lip.



Image: Cleaning the door seal

1. Finally, clean the gasket.