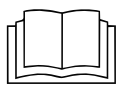


Valid for conversion kit cooking chamber sensor MM10036776

The target group for this installation manual is trained qualified personnel entrusted with the technical functioning and operation of the unit.



Read the installation instructions for the units and observe the safety information.

About these instructions

The conversion kit replaces the cooking chamber sensor 10013520.

Safety instructions

Organizational measures

Risk of property damage and personal injury from lack of organizational measures

- Use equipment and protective gear suitable for the activity.

Danger of electric shock from live components.

- Prior to working on the electrical system, switch off the unit, disconnect the electrical system from the mains and prevent power from being switched on again. Check to ensure the system is dead.
- Use only insulated tools.

Scope of delivery and installation overview

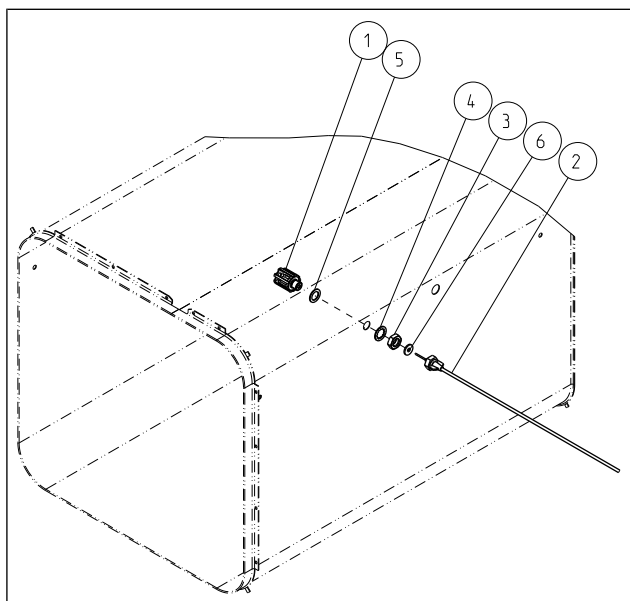
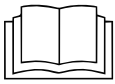


Image: Overview of cooking chamber sensor conversion kit

- | | |
|--|---|
| 1 Protective guard for cooking chamber sensor (10022864) | 2 Cooking chamber sensor 2.7 meter cable (10036795) |
| 3 Hexagon nut M12 (113097) | 4 Serrated washer 12.5 mm (121210) |
| 5 Flat ring gasket 12 x 19 mm (214009) | 6 Flat ring gasket 5.2 x 5 mm (10019583) |

Opening the appliance



Open and close the unit according to the service instructions.

FlexFusion

- Remove the left and right side panels.
- Open the control panel.

SpaceSaver (Gen1)

- Remove the top cover from the unit.

For units with MagicHood, the hood must be removed beforehand.

SpaceSaver Team

- Remove the panel from the installation compartment (below the lower cooking chamber). Pull out the drawer.
- Remove the right side panel.

Control board assignment

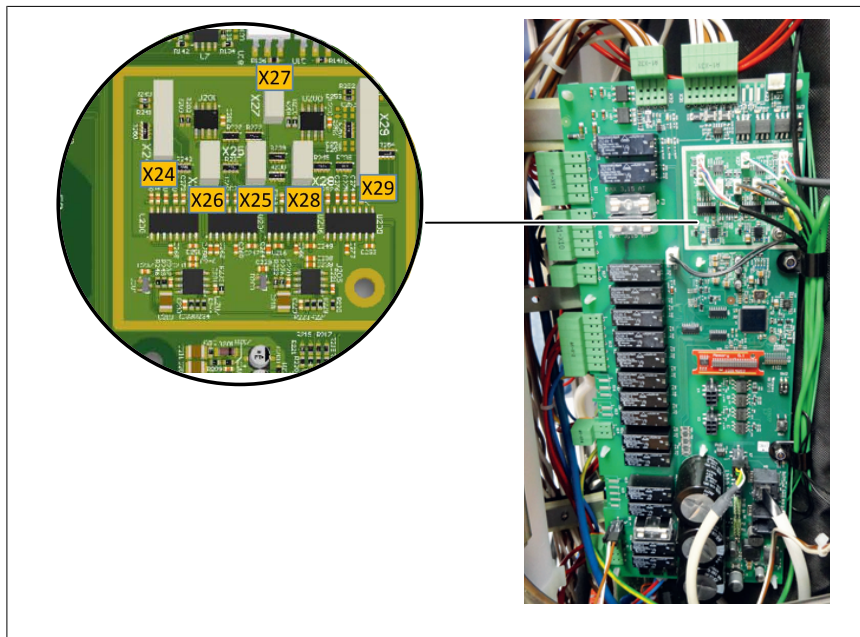


Image: Control board (assignment varies with version)

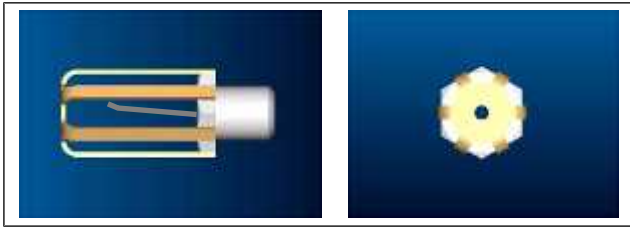
X25 Cooking chamber sensor B2
(upper sensor for freestanding units)

X26 Cooking chamber sensor B3
(Only for freestanding units. Lower sensor)

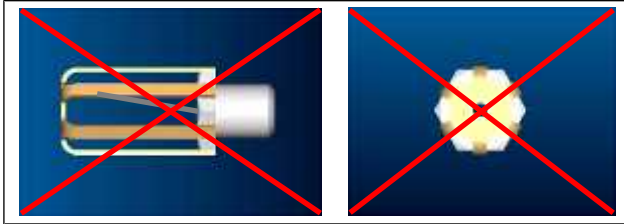
Dismantling the cooking chamber sensor

- Remove cooking chamber sensors from control board.
- Dismount strain relief.
- Loosen the sensor screw connection and pull out the cooking chamber sensor.
- Attach the cable from the new temperature sensor to the existing temperature sensor to use it as a pull cable.
- Remove the protective cage and screws. These are replaced by the conversion kit.

Fitting the cooking chamber sensor



Correct assembly. The tip is slightly bent upwards and no bracket must point upwards from the protective cage.



Incorrect sensor mounting.

- Install cooking chamber sensor with conversion kit according to overview. Note the position of the protective cage.
- Pull the cable to the control board.
- Plug cooking chamber sensor into control board and mount strain relief.
- Bend cooking chamber sensor slightly upward in order to avoid drop formation on the test prod.

Concluding work

1. Close the unit using the procedure described in the service manual.
2. Conduct a function test.