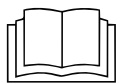


Valid for MM10035504

INFORMATION

This operation panel requires software version 2.xx and associated additional content



Read the installation instructions for the units and observe the safety information.

The target group for this installation manual is trained qualified personnel entrusted with the technical functioning and operation of the unit.

Safety instructions

Organizational measures

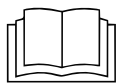
Risk of property damage and personal injury from lack of organizational measures

- Use equipment and protective gear suitable for the activity.

Danger of electric shock from live components.

- Prior to working on the electrical system, switch off the unit, disconnect the electrical system from the mains and prevent power from being switched on again. Check to ensure the system is dead.
- Use only insulated tools.

Check before replacing



Troubleshoot using the service manual.

Order of steps

- Backing up data if service menu can be accessed
- Exporting your own cooking programs to a USB stick (if available)
- Removing the operation panel
- Remove SD card
- Remove the WLAN module from the operation panel (if present)
- Insert the SD card into the new operation panel
- Install WLAN module from operation panel (if available)
- Installing the new operation panel
- Attaching the film keypad
- Updating the software and importing additional content
- Setting the date and time
- Restoring data
- Importing your own cooking programs from a USB stick
- Optional: Load OEM settings and select cookbook

Replacing the FlexFusion GEN2 operation panel

Preparing the USB stick

Prerequisite

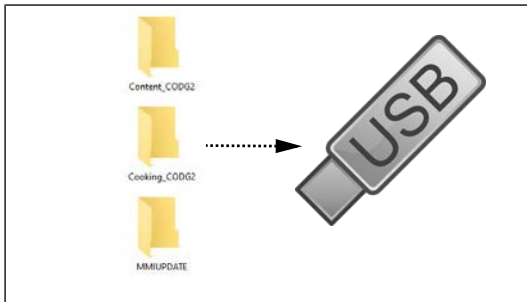
- USB stick.
 - ↳ Formatting FAT (standard).
 - ↳ The disk should be empty if possible.
- Latest software update and additional content
 - ↳ The update is available on the manufacturer's website.

INFORMATION

The additional content contains sound files and graphics. These must be installed after replacing the operation panel.

Preparing the USB stick

- Open and unzip the downloaded zip file.
- Copy the unpacked folders "MMIUpdate", "Content_CODG2" and "Cooking_CODG2" into the main directory of the USB stick. The content and folder structure must not be changed.



Opening the Settings menu and Service menu

Replacement requires access to the Settings menu, Basic settings and Service menu.

Calling up the Setting menu

- Switch on the unit.
- Tap the "Unit functions" button.
 - ↳ Display of *Appliance functions* menu.
- Tap the "Settings" field.
 - ↳ Display of *PIN* window.
- Enter password "111" and tap the *Confirm* field.
 - ↳ Display of Device Settings menu.

Opening the Service menu

- Switch on the unit.
- Tap the "Unit functions" button.
 - ↳ Display of *Appliance functions* menu.
- Tap the "Settings" field.
 - ↳ Display of *PIN* window.
- Enter password "1967" and tap the *Confirm* button.
 - ↳ Display of the Service menu.

Backing up data

Backup function for parameters (for example, customer settings, calibration values). Saving data on the internal SD card and USB stick (if plugged in).

1. Open the Service menu as described.
2. Tap the "Backup data" field.
3. Touch the *Confirmation* field.
 - ↳ Backup data on the SD card.
 - ↳ A confirmation then appears on the touchscreen.
4. Tap the "OK" field.

Exporting your own cooking programs



a buttonAutoChef

- Switch on the unit.
- Insert the USB flash drive.
- Tap the "autoChef" button.
 - ↳ Display of *Automatic cooking (autoChef)* menu.
- Tap the "autoChef" button in the information strip.
 - ↳ Display of *autoChef* window.
- Tap the "Export cooking programs" field.
- Tap the *Confirm* button.
 - ↳ All user-created cooking programs are exported to the USB stick from the cookbook.
 - ↳ A confirmation then appears on the touchscreen.

Opening the operation panel

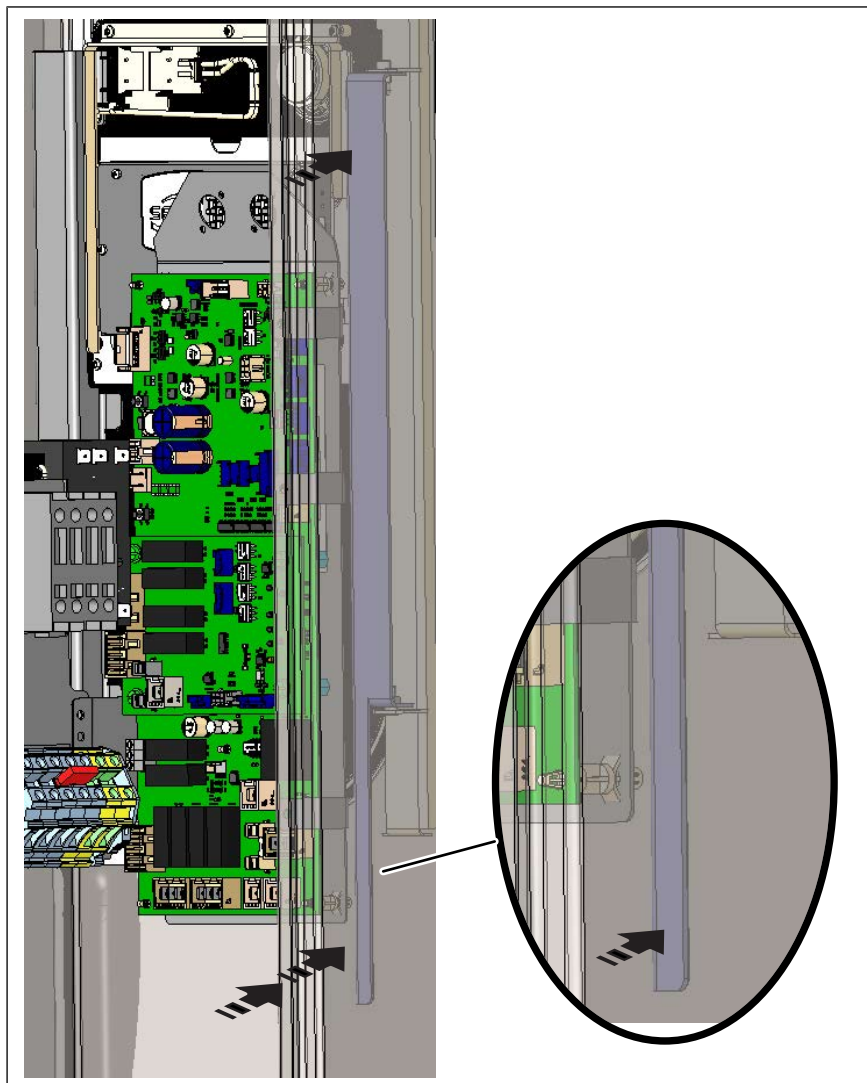


Image: Unlock the operation panel

1. Remove the left side wall.
2. Press the unlocking mechanism forwards.
↳ The operation panel is unlocked.
3. Opening the operation panel

Removing the operation panel

Overview

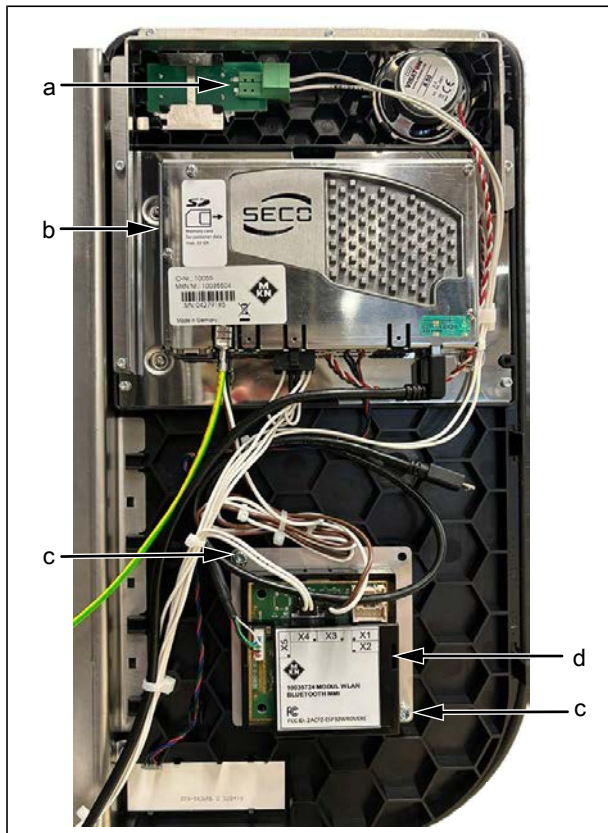


Image: Rear operation panel with WLAN module

- | | |
|-----------------------------------|---------------|
| a On/off switch connection | B SD card |
| c Screw for fastening WLAN module | d WLAN module |

Disassembly

- Disconnect the plug from the operation panel and remove the cable tie.
- Disconnect the plug leading into the unit from the WLAN module (if present).
- Remove the operation panel by lifting it up.
- Dismantle the WLAN module.
- Remove the holder for the WLAN module.
- Remove the SD card.

Replacing the FlexFusion GEN2 operation panel

Removing the LED field insert

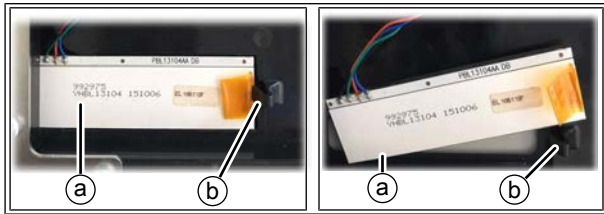


Image: Operation panel - LED field

a LED field

b Locking mechanism

Use the LED field insert from the existing operation panel.

→ Remove the LED field after releasing the locking mechanism.

→ Remove the insert.

Prepare new operation panel

Transfer SD card

→ Remove the SD card from the new operation panel. The SD card is not required.

→ Insert the SD card removed from the existing operation panel.

INFORMATION

The SD card must be removed from the dismantled operation panel. This includes the manufacturer's cookbook.

Installing the WLAN module

→ Mount the holder for the WLAN module on the new operation panel.

→ Install WLAN module.

→ Connect both cables from the WLAN module to the operation panel.

Attaching the film keypad

→ Affix included foil.

Installing the LED field insert

→ Remove the LED field after releasing the locking mechanism.

→ Place the insert in position.

→ Install the LED field.

Installing the operation panel

Mounting is done in the reverse order.

→ Attach operation panel

→ Attach plug

→ Closing the operation panel

→ Install side panel (alternatively after performing the software update)

Updating the software

- Insert the USB stick
- Switch on the unit.
 - ↳ Follow the instructions on the touchscreen

INFORMATION

The update can take up to 15 minutes.

- ↳ A confirmation then appears on the touchscreen
- Tap the "OK" field
 - ↳ The software restarts automatically

INFORMATION

After the update, a blue screen may appear and the software does not start. In this case, switch the unit off and then back on. In rare cases, this may happen again.

Import additional content

- Insert the USB stick.
- Open the Service menu as described.
- Select the field "Import additional contents" on the left area of the menu by swiping.
- Tap the "Import additional contents" field.
- Tap the "OK" field.
 - ↳ The data is imported.
- A confirmation then appears on the touchscreen.
- Tap the "OK" field.

Restoring data

1. Open the Service menu as described.
2. Tap the "Restore data" field.
3. Touch the *Confirmation* field.
 - ↳ Restore data from the SD card.
 - ↳ A confirmation then appears on the touchscreen.
4. Tap the "OK" field.

Importing your own cooking programs

- Switch on the unit.
- Insert the USB flash drive.
- Tap the "autoChef" button.
 - ↳ Display of *Automatic cooking (autoChef)* menu.
- Tap the "autoChef" button in the information strip.
 - ↳ Display of *autoChef* window.
- Tap the "Import cooking programs" field.
- Tap the *Confirm* button.
 - ↳ All cooking programs on the USB stick are imported to the cookbook.
 - ↳ A confirmation then appears on the touchscreen.

Settings

Setting the date and time

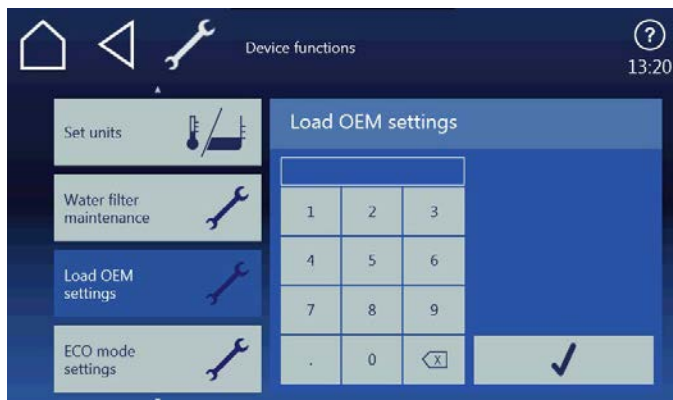


Prerequisite

- Open the Settings menu as described.
- Tap the "Set date and time" field.
 - ↳ The *Setting* window opens.
 - ↳ The *Keyboard* opens.
- Enter the date and time.
- Tap the Confirm button.
 - ↳ The *Keyboard* closes.
- ↳ The date and time are set.

OEM settings

Loading settings



INFORMATION

The HennyPenny OEM code is 110000

- Open the Settings menu as described.
- Wipe to select the page with the "Load OEM settings" field in the left menu area.
- Tap the "Load OEM settings" field.
- Enter the OEM code and tap the *Confirm* field.
 - ↳ The data is loaded.
 - ↳ The software restarts automatically.

INFORMATION

A different OEM code may be required for some customer groups.

Select cookbook

INFORMATION

After the OEM settings have been loaded, select the cookbook.



- Open the Settings menu as described.
- tap on "Select cookbook".
- Select cookbook and confirm with OK.
- Restart the device using the button *On Off*.

FM09-118B