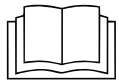


## Valid for motor control board MM10037813



Read the installation instructions for the units and observe the safety information.

The target group for this installation manual is trained qualified personnel entrusted with the technical functioning and operation of the unit.

## Safety instructions

### Organizational measures

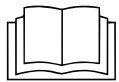
#### Risk of property damage and personal injury from lack of organizational measures

- Use equipment and protective gear suitable for the activity.

#### Danger of electric shock from live components.

- Prior to working on the electrical system, switch off the unit, disconnect the electrical system from the mains and prevent power from being switched on again. Check to ensure the system is dead.
- Use only insulated tools.

## Check before replacing



Troubleshoot using the service manual.

In the case of sporadic fan faults, there is usually another cause. In this case, troubleshooting must be carried out in accordance with the service instructions. A defective motor control unit can often be recognized by traces of smoke on the circuit board. If necessary, also replace the power board (motor controller) for the motor.

## Note on compatibility

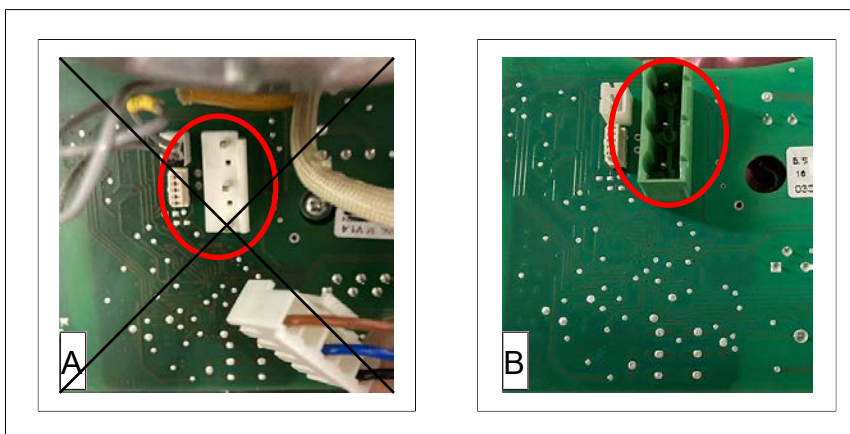


Image: Plug on circuit board behind motor cover

A Version until 2016

B Version from 2016

The control board is only suitable for motors with green plugs. This version has been installed since 2016.

## Replace circuit board

### Overview

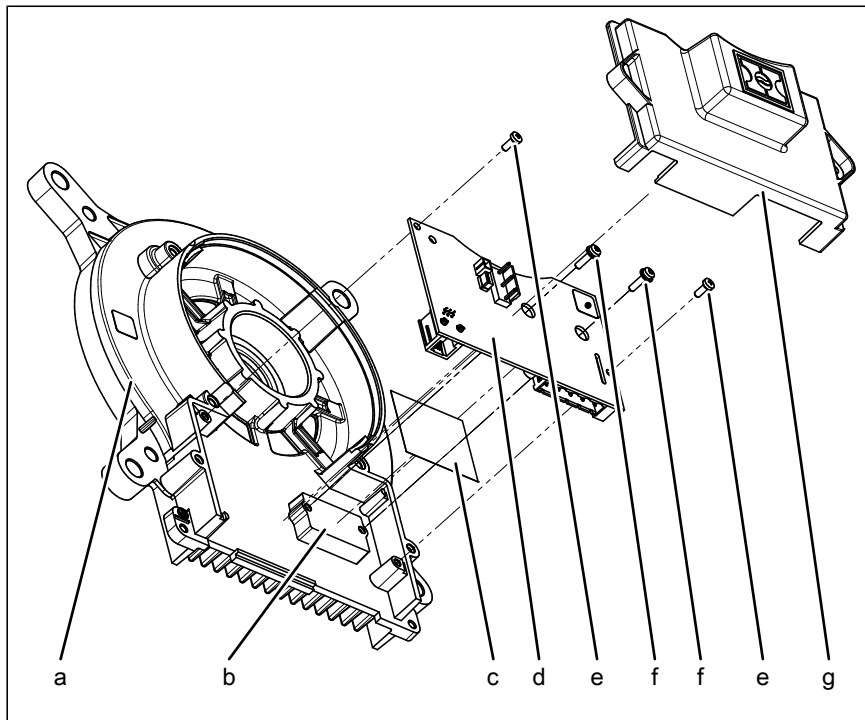


Image: Motor overview

- |  |                       |
|--|-----------------------|
| a Motor  | b Heat sink           |
| c Thermally conductive foil                      | d Motor control board |
| e M3x8 screw                                     | f M3x12 screw         |
| g Control board cover (attached with two screws) |                       |

### Dismantling the circuit board

1. Remove the left side wall.
2. Disconnect the supply lines to the motor.
3. Remove the control board cover.
4. Disconnect the cables leading to the circuit board.
5. Remove the four screws on the circuit board.
6. Remove the circuit board from the motor.

### Mounting the circuit board

1. Thoroughly clean the surface of the heat sink. The surface must be as smooth as possible and free of residue.
2. Install the new circuit board together with the enclosed heat conducting foil. The torque of the screws is 0.6 Nm. Only tighten the screws very lightly.
3. Connect the cables to the circuit board.
4. Fit the control board cover.
5. Connect the supply cables to the motor.
6. Fit the left side panel. If necessary, carry out a test run in advance.