

Applies to control board 10019108

The target group for this installation manual is trained qualified personnel entrusted with the technical functioning and operation of the unit.



Read the installation instructions for the units and observe the safety information.

Safety instructions

Organizational measures

Risk of property damage and personal injury from lack of organizational measures

- Use equipment and protective gear suitable for the activity.

Danger of electric shock from live components.

- Prior to working on the electrical system, switch off the unit, disconnect the electrical system from the mains and prevent power from being switched on again. Check to ensure the system is dead.
- Use only insulated tools.

Check before replacing



Troubleshoot using the service manual.

Order of steps

- Dismantle additional circuit board (option)
- Replace control board
- Dismantle additional circuit board (option)
- Software update
- Only for units with Touch control panel: Restore the data

Preparing the USB stick

Prerequisite

→ USB stick.

- ↳ Maximum size 32 GB.
- ↳ FAT formatting (default).
- ↳ The disk should be empty if possible.

→ Current software update and additional content

- ↳ The update is available at the manufacturer's website.

Preparing the USB stick

- Unpack the present software update. This is provided as a ZIP file. In general, the unzipped folder is in the same directory as the previously compressed one.
- Copy the unzipped folder "MMIUpdate" into the root directory of the USB stick. The contents and folder structure must not be changed.

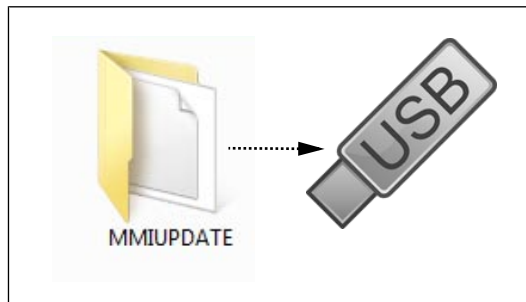


Image: Preparing the USB stick

Opening the appliance

→ Remove the top cover from the unit.

For units with MagicHood, the hood must be removed beforehand.

Overview

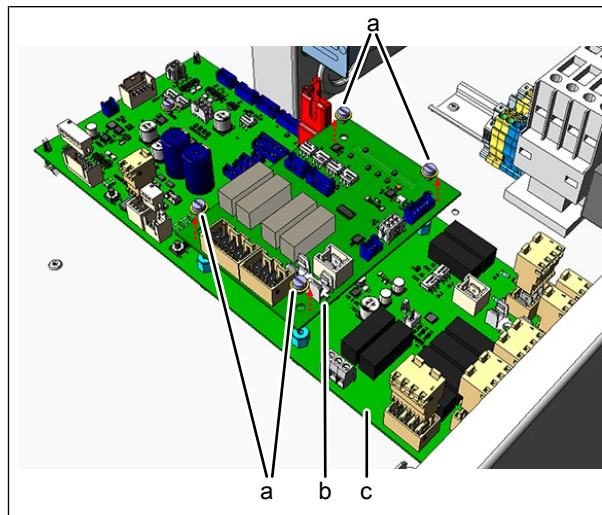


Image: Control board with additional circuit board

- | | |
|--------------------|-------------------------------|
| a Bolts | b Additional circuit board A3 |
| c Control board A2 | |

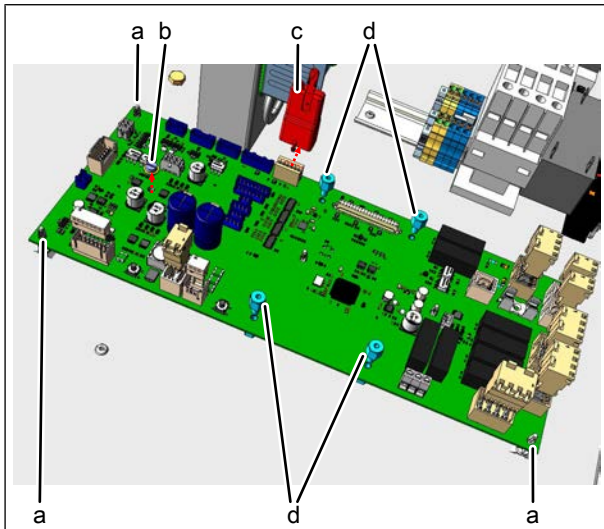


Image: Control board

- | | |
|----------------|--------------------------|
| a Plastic clip | b Screw |
| c NFC key | d Spacer or plastic clip |

Dismantle additional circuit board (option)

- Disconnect all connectors on the additional circuit board.
- Remove screws.
- Remove the additional circuit board from the control board.

Removing the control board

- Disconnect all connectors from the control board.
- Remove the fastening screws.
- Remove the control board by unlocking the plastic clips.
- Remove the NFC key.

Installing the control board and additional circuit board

INFORMATION

The unit works only with NFC key.

- Mounting is done in the reverse order.
- Attach the NFC key to the new control board.

Updating the software & restoring data

Opening the Service menu

- Switch on the unit.
- Tap the "Unit functions" button.
 - ↳ Display of *Appliance functions* menu.
- Tap the "Settings" field.
 - ↳ Display of *PIN* window.
- Enter password "1967" and tap the *Confirm* button.
 - ↳ Display of the Service menu.

Perform a software update

- Insert the USB stick
- Open the Service menu as described.
- Select the "Software update" field on the left area of the menu by swiping
- Tap the "OK" field
 - ↳ Follow the instructions on the touchscreen

INFORMATION

The update can take up to 15 minutes.

- ↳ A confirmation then appears on the touchscreen
- Tap the "OK" field
 - ↳ The software restarts automatically

INFORMATION

After the update, a blue screen may appear and the software does not start. In this case, switch the unit off and then back on. In rare cases, this may happen again.

Restoring data

1. Open the Service menu as described.
2. Tap the "Restore data" field.
3. Touch the *Confirmation* field.
 - ↳ Restore data from the SD card.
 - ↳ A confirmation then appears on the touchscreen.
4. Tap the "OK" field.